

AL RAIDAH ALLIED CO.

شركة المتحدون الرائدة

Company Profile





TABLE OF CONTENTS

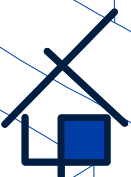
| | |
|------|----------------------------|
| ● 04 | INTRODUCTION |
| ○ 05 | Note from CEO |
| ○ 06 | Company Overview |
| ○ 07 | DESIGN + BUILD |
| ○ 08 | Warranty Period |
| ○ 09 | Services We Offer |
| ● 10 | OUR PROJECTS |
| ○ 12 | Industrial |
| ○ 34 | Commercial |
| ● 56 | CONTACT INFORMATION |
| ● 57 | OUR CLIENTS |
| ● 58 | OUR GROUP |
| ● 59 | OUR GLOBAL PARTNERS |
| ● 60 | OUR HEADQUARTERS |



01

INTRODUCTION

- Note from CEO
- Company Overview
- Our Process
- Services We Offer
- Our Group
- Contact Information
- Our Headquarters



Note from CEO

As a valuable partner for our clients, Raidah Allied Construction and Maintenance offers value-added construction services to customers within the Kingdom of Saudi Arabia, by crafting a mutually rewarding relationship that endows the highest level of quality in construction services at fair and market competitive rates. For every project, we ensure there are construction project managers / engineers that operate with absolute proficiency, offering innovative approaches to challenges every single day. As a result we achieve repetitive and referral business opportunities through careful customer relationship management.

Built on a foundation of experience and expertise in construction management, design and execution, RAC is dedicated to exploit all its know-how, skills and wide range of technical tools to support projects to blossom, while meeting budget and time constraints. Projects undertaken are free of high and costly delays, risks and conflicts. We exhibit a high degree of timeliness, attention to detail and service-minded attitudes to maintain the highest levels of professionalism, integrity, honesty and fairness with our suppliers, subcontractors, professional associates and customers.

In all we do, we will, as a team, always be dedicated to providing an exceptional and professional approach to constructing quality projects which meet budget and schedule goals.

As General Manager of RAC, I firmly believe that if we can achieve a place in the heart & mind of our clients as a provider of innovative solutions for integrated construction services that suit every need and fulfill all dreams, the possibilities for the growth of Ra'idah Allied will be unlimited no matter how challenging the construction environment.

RAC is a business truly capable of benefiting and profiting both society and our clients through delivering quality and professionalism.

Eng. Basil Abukhadra
General Manager
Al Raidah Allied



Company Overview

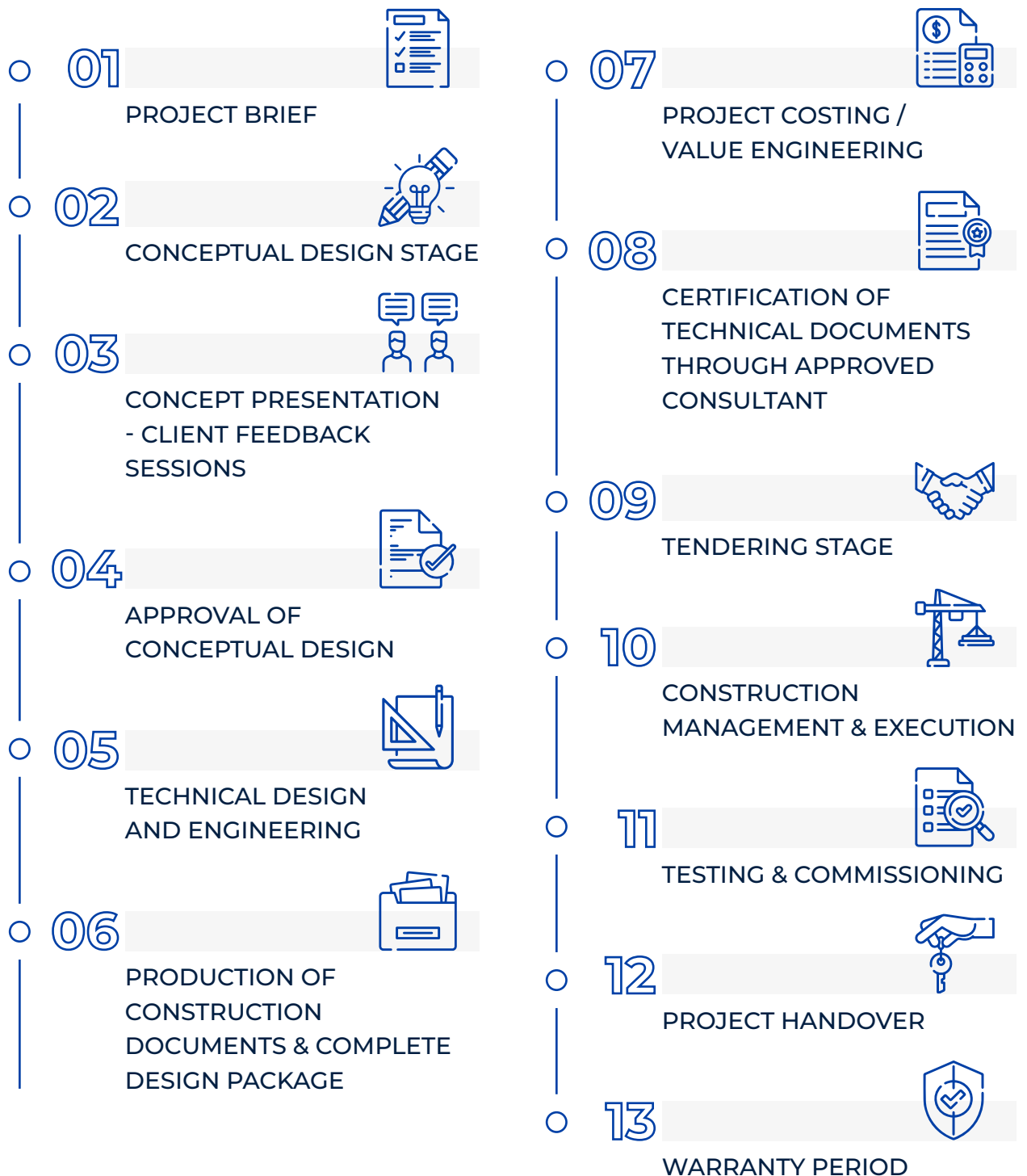
Established in 2007, RAC has played a part in the construction of projects across industries. With humble beginnings focusing on small commercial fit outs, we have grown to execute complex industrial, commercial and residential projects. With a skilled design team, capable of meeting the needs of the most demanding clients, we have developed a reputation for quality and professionalism in all aspects of our operation.

As a company that focuses on Design + Build projects, we are able to take our clients through the construction process from beginning to end. Truly, a one stop shop. We offer pure design services as well as several different arrangements for construction management. Our experienced work force is capable of delivering the highest quality in finishing and we only work with the country's top subcontractors to ensure our final product consistently exceeds our clients' expectations.



DESIGN + BUILD

Our Process



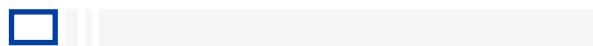
Warranty Period

As a testament to our dedication to quality, we offer warranty periods on all our work. In addition we offer preventative maintenance programs to ensure that all upkeep and maintenance activities are done to the highest standards, ensuring the building is functioning properly and extending it's life span as much as possible, maximizing the value to our clients. We prevent any costly unplanned downtime from unexpected equipment failure. We address the problem before it occurs.

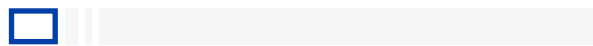


Services We Offer

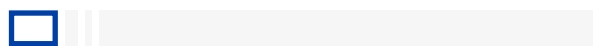
SERVICES



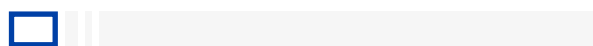
CONSTRUCTION



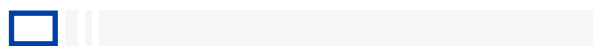
PREVENTATIVE
MAINTENANCE



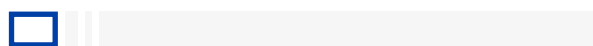
FACILITY MANAGEMENT



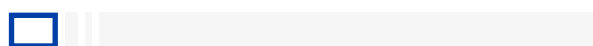
PRE ENGINEERED BUILDINGS



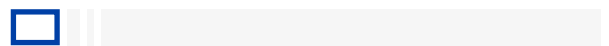
WOODWORK



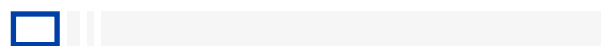
METAL WORK



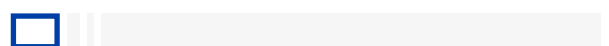
FIT OUTS AND RENOVATIONS



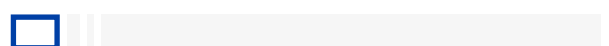
CONSTRUCTION
MANAGEMENT



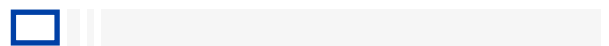
ARCHITECTURAL DESIGN
& ENGINEERING



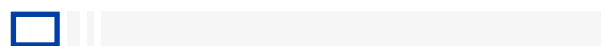
MEP DESIGN



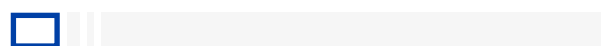
ARCHITECTURAL
3D RENDERING



WAYFINDING, SPATIAL
AND SIGNAGE DESIGN



FURNITURE SUPPLY & DESIGN



SUPPLY OF CONSTRUCTION
ACCESSORIES



03

OUR PROJECTS

- Industrial
- Commercial





ALLIED CO.
شركة المتحدة
Profile

ksa.com



INDUSTRIAL

01

Al Amoudi Warehouse

Al Amoudi Group

Project Duration 9 Months

Client Al Amoudi Group

Project Description Textile and FMCG Warehousing Facility

Scope of Work Pre Engineered Steel Building Erection,
MEP, Civil Works





INDUSTRIAL

02

Safwa Cement Factory - Clinker

Al Khayyat Group

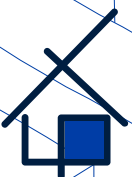
Project Duration 6 Months

Project Date 2019 - Current

Client Al Khayyat Group

Project Description Al Safwa cement Factory Complex

Scope of Work Turnkey - Additives Storage Warehouse





INDUSTRIAL

03

Safwa Cement Factory - Production Line Foundation Works

Al Khayyat Group

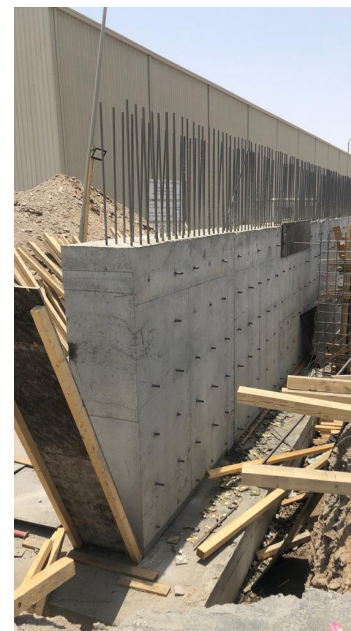
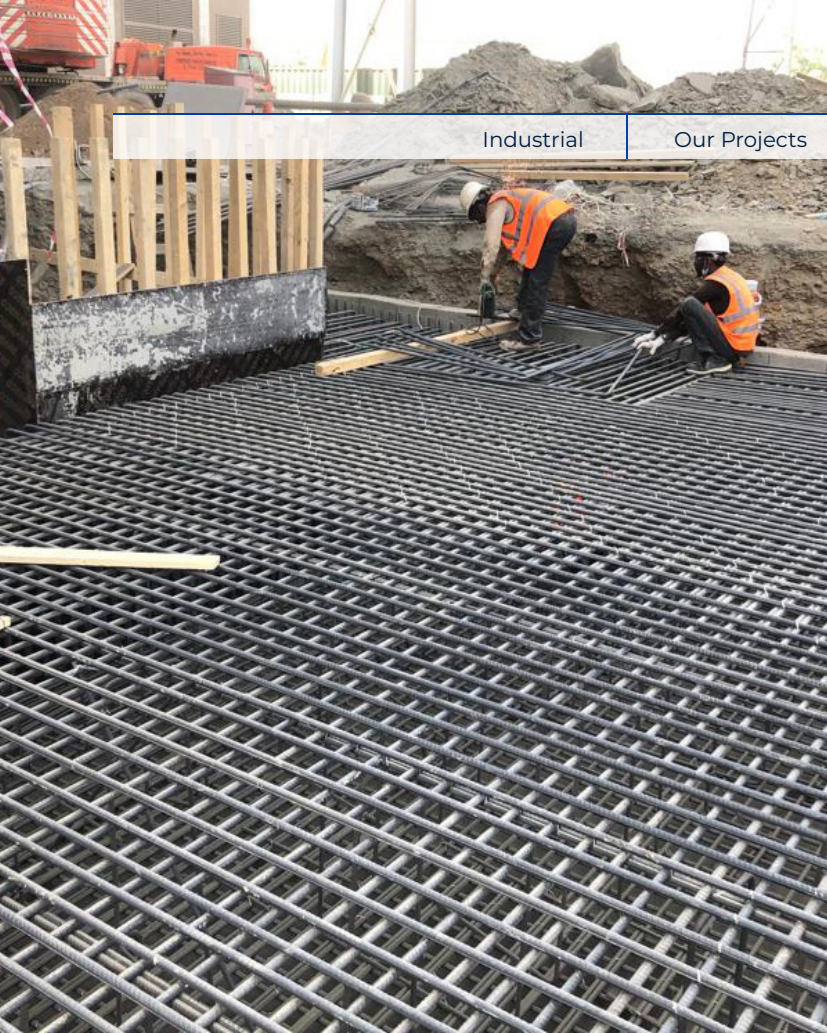
Project Duration 4 Months

Client Al Khayyat Group

Project Description New Foundations for Production Line

Scope of Work Civil Works - Foundations





INDUSTRIAL

04

DOW Chemical

Project Duration 9 Months

Client Juffali Group

Project Description Chemical production and storage
Facility - Al Khomrah

Scope of Work Pre Engineered Steel Building Erection,
MEP, Civil Works





INDUSTRIAL

05

Michelin retreading Factory

Juffali Group

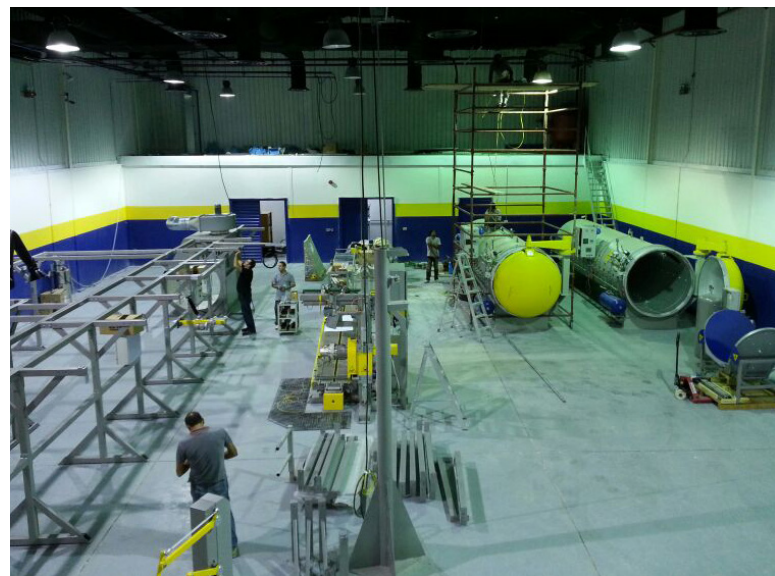
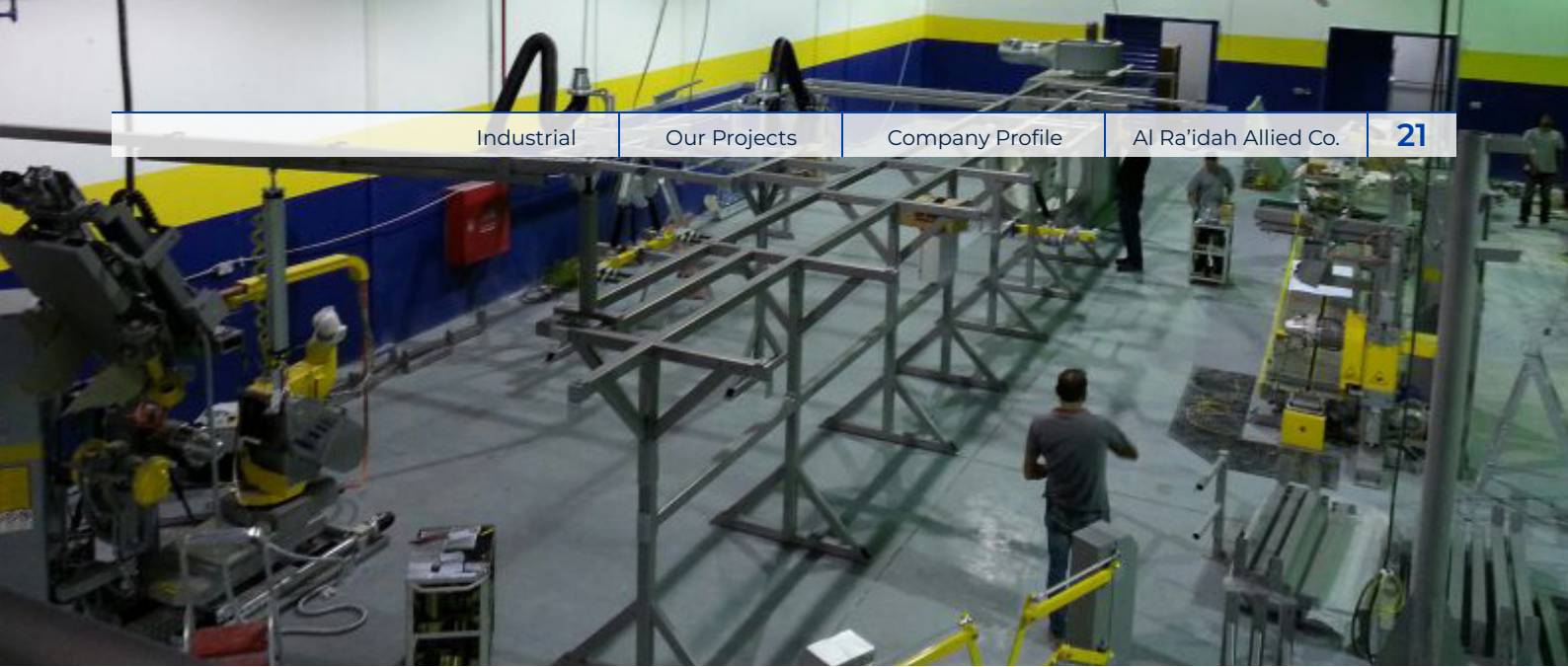
Project Duration 6 Months

Client Juffali Group

Project Description Tire Re treading facility 3000

Scope of Work Electromechanical Fit out, Equipment
Installation





INDUSTRIAL

06

Michelin Tyre Plus Rollout

Juffali Group

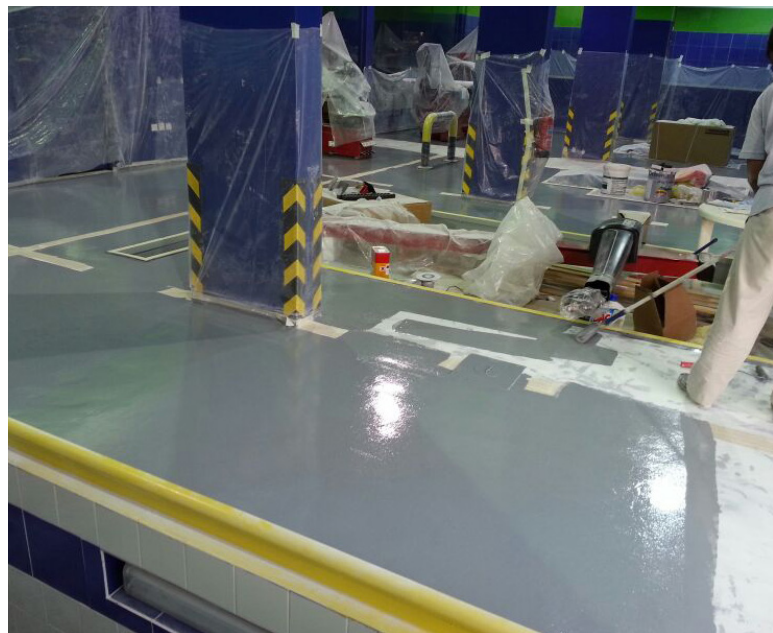
Project Duration 6 Months

Client Juffali Group

Project Description Tyre Service Center

Scope of Work Turnkey - Civil Works, MEP, Finishing





FACTORY

07

Jundi Polyurethane Industrial

Jundi Polyurethane

Project Duration 9 Months

Client Jundi Polyurethane





INDUSTRIAL

08

Leylaty Warehouse - Al Khomra

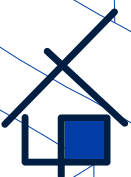
Leylaty Group

Project Duration 2 Months

Client Xenel Group

Project Description Warehouse

Scope of Work Renovation - MEP, Finishing Works,
Racking System Supply





INDUSTRIAL

09

Senddex K14

Xenel Group

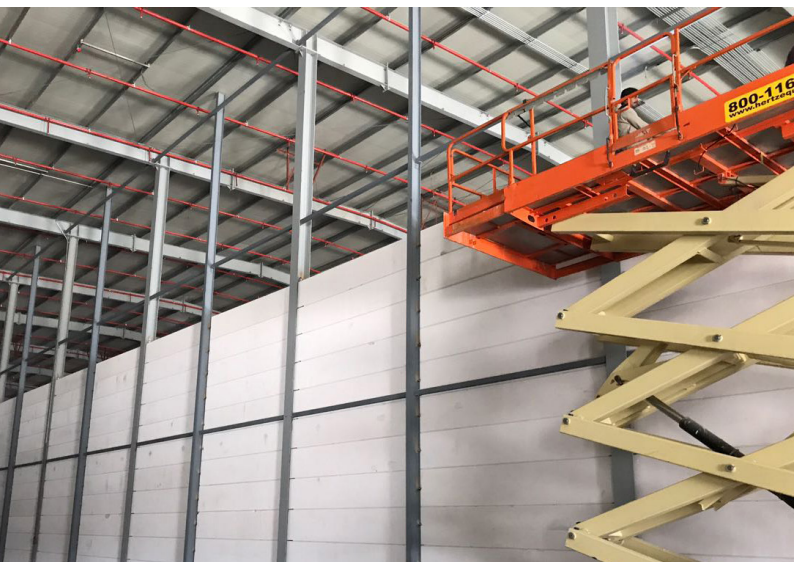
Project Duration 14 Months

Client Xenel Group

Project Description Senddex - Third Party Logistics Facility - Kilo 14 - Jeddah

Scope of Work Turnkey - 18C Temperature Controlled- 10,000m2 Warehouse, Offices, Accomodation Building, Asphalt Parking Lot & Truck Service Stops.





INDUSTRIAL

10

Senddex RUH

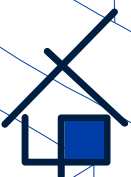
Xenel Group

Project Duration 12 Months

Client Xenel Group

Project Description Turnkey - 8,000m2 Temperature
Controlled Warehouse

Scope of Work Turnkey - Civil Works, MEP , Asphalt,
Racking System Supply





INDUSTRIAL

11

SSF

Xenel Group

Project Duration 6 Months

Client Xenel Group

Project Description Warehouse Extension

Scope of Work Steel Erection, MEP, Epoxy Flooring





COMMERCIAL

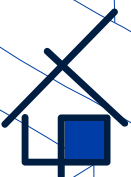
12

Saudi TV and Radio Building

Project Duration 2 Months

Project Description Commercial - Mechanical Fixing

Scope of Work Mechanical Fixing of new façade





COMMERCIAL

13

Al Oula Foundation

Al Oula Foundation

Project Duration 2 Months

Client Al Oula Foundation

Project Description Residential complex Renovation

Scope of Work Renovation - MEP, Finishing Works,
Woodwork





COMMERCIAL

14

Leo Burnett Head Office

Leo Burnett KSA

Project Duration 3 Months

Client Leo Burnett KSA

Project Description Commercial Fit Out

Scope of Work Fit Out - MEP, Finishing Works



WE BE
THE PO
HUMA

unee



COMMERCIAL

15

Red Sea Mall Admin Building

SEDCO

Project Duration 8 Months

Client SEDCO

Project Description Commercial - Finishing and MEP Works

Scope of Work MEP, Finishing Works





COMMERCIAL

16

DAQ - Multiple projects

Dr. Suhail Farouki

- Eden Center
- Prince Sultan St.
- Jeddah Square
- Mandarin
- Mosadia
- Obhur

Client

Dr. Suhail Farouki

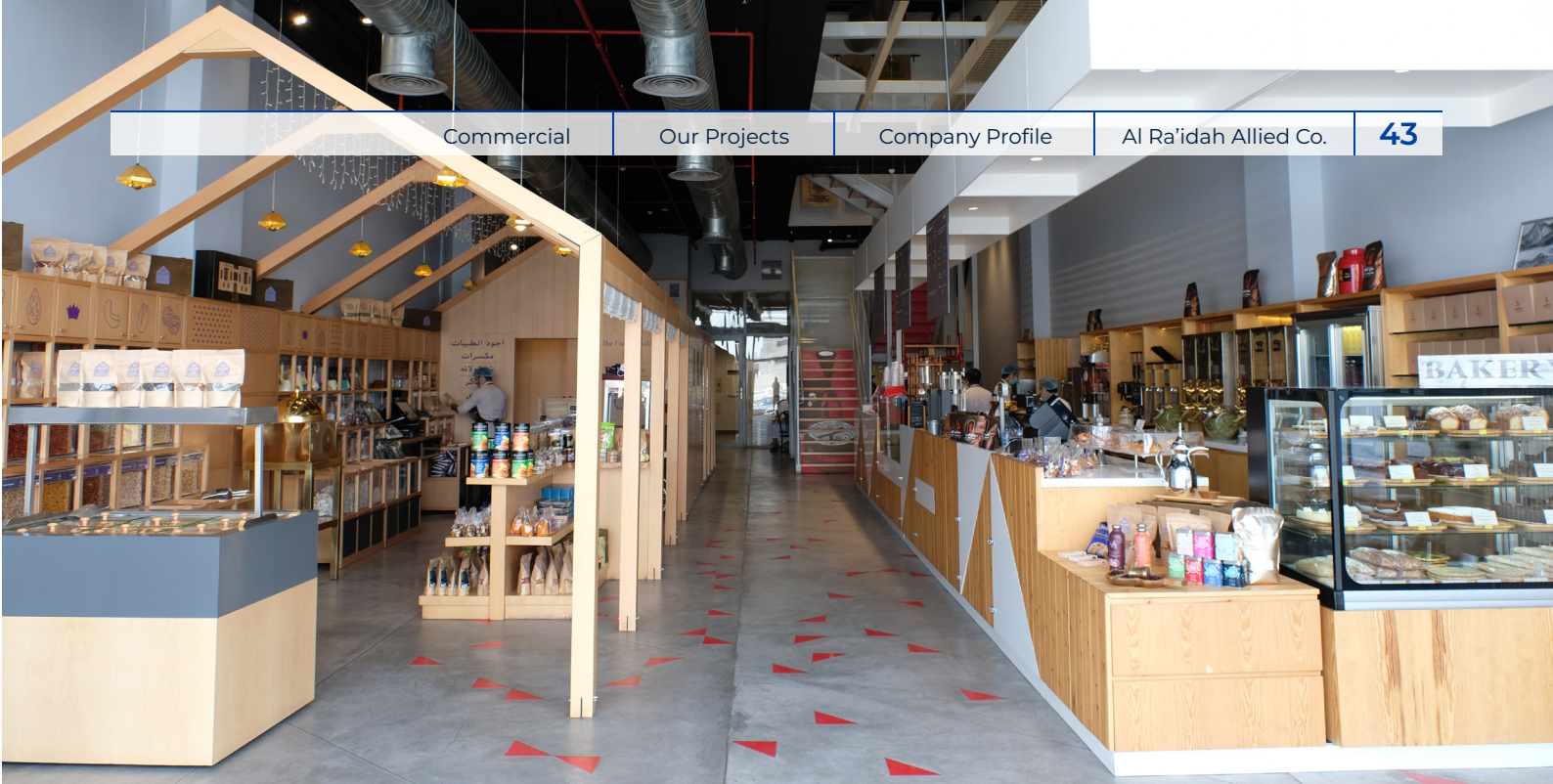
Project Description

Café Chain

Scope of Work

Turnkey Fitout - Civil, MEP, Woodwork ,
Finishing, Equipment Supply





COMMERCIAL

17

Byblos Express

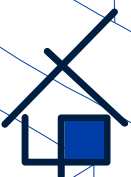
Leylaty Group

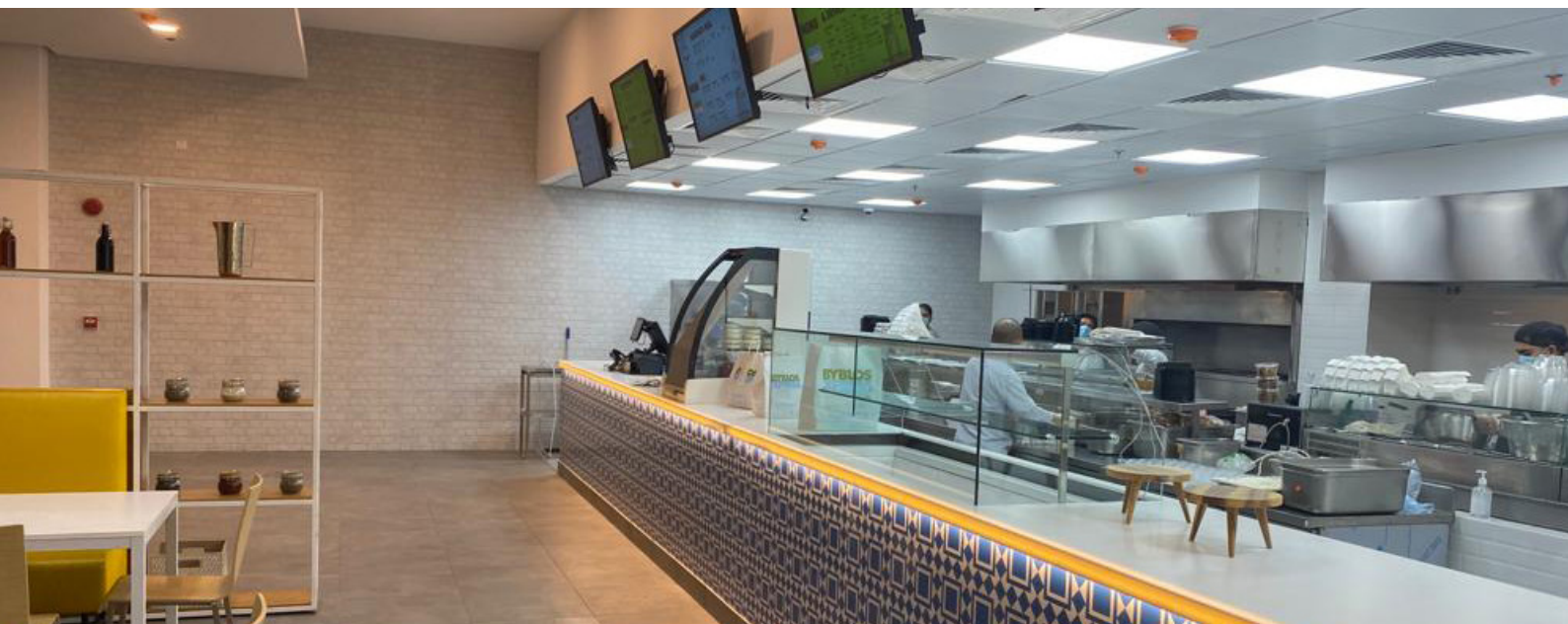
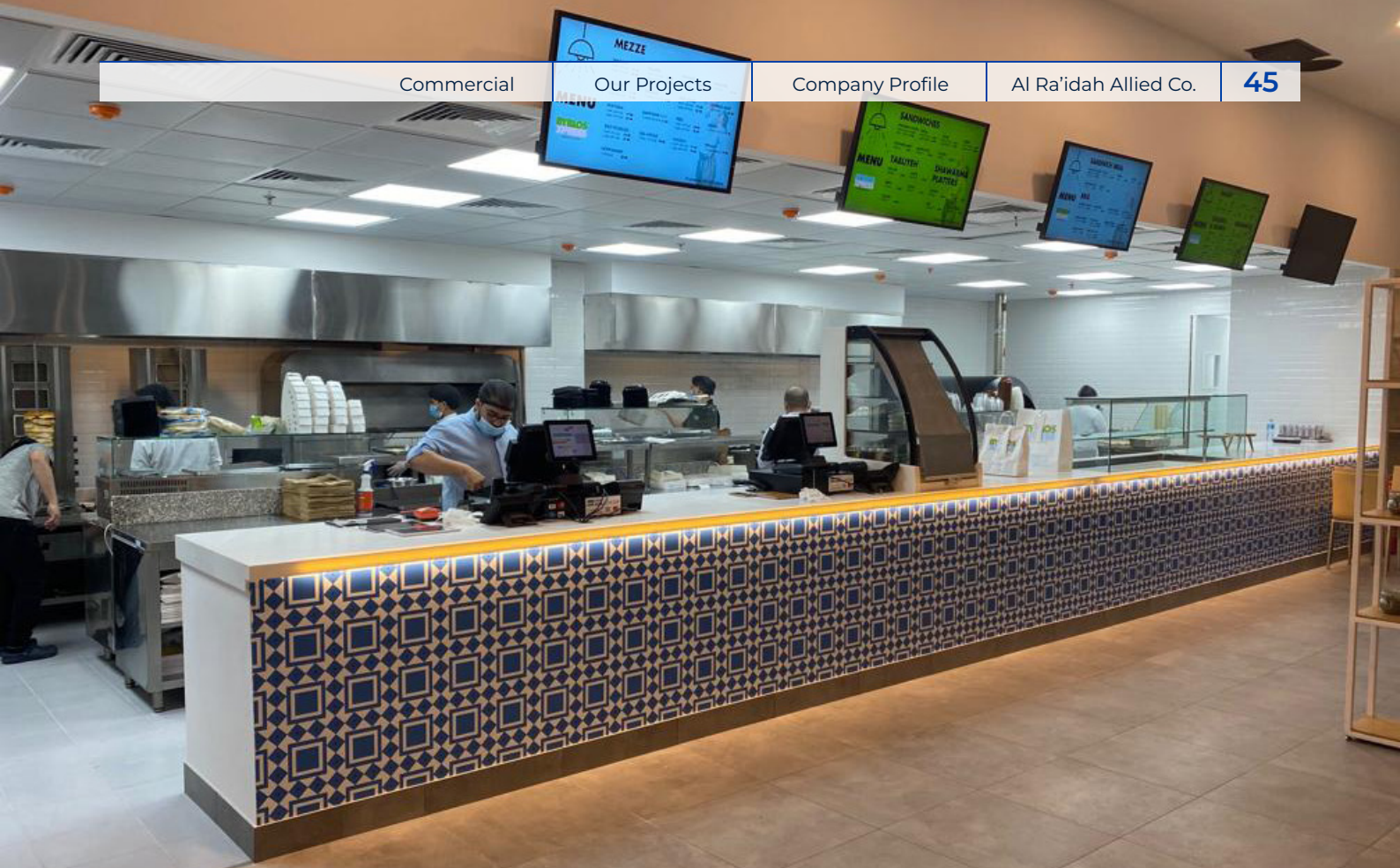
Project Duration 3 Months

Client Leylaty Group

Project Description Restaurant Chain

Scope of Work Fit Out - MEP, Finishing Works





COMMERCIAL

18

Frais and Fresh Stores

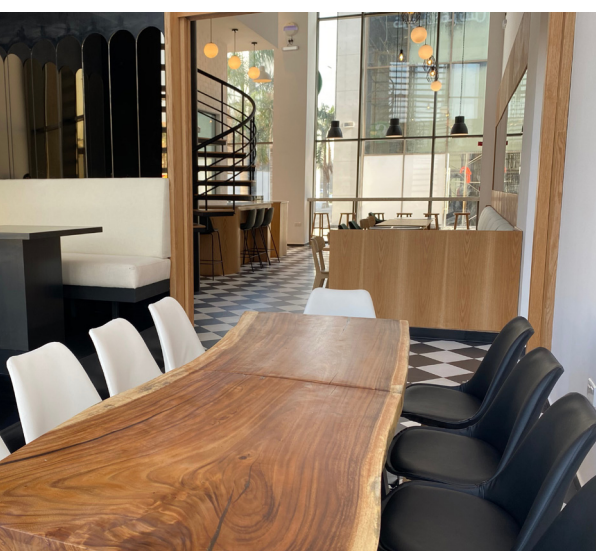
Noury Group

Client Noury Group

Project Description Restaurant Franchise

Scope of Work Turnkey Fitout - Civil, MEP, Woodwork ,
Finishing, Equipment Supply





COMMERCIAL

19

Patchi - Multiple projects

Noury Group

- Taif
- Najran
- Hail - Salma Mall
- Hail - Jarir Mall
- Hail - King Fahad Road
- Riyadh - Exit 2
- Abha
- Riyadh - Exit 10
- Tabouk
- Medina
- Jizan - Al Kadi Mall
- Riviera
- Patchi - Hafr Al Batin
- Tahlia
- Al Ehsa - Rashid Mall
- Jeddah - Aziz Mall
- Dawadmi
- Hufoof
- Bisha
- Khamis Msheit
- Dammam - dhahran Mall
- Patchi - Jeddah - Medina Road
- Patchi - Bahrain - Al Saif Mall
- Womens Location
- Main Warehouse
- Medina - Rashid Mall
- Jeddah - Stars Avenue
- Dammam - Othaim Mall

Client Noury Group

Project Description Chocolatier

Scope of Work Turnkey Fitout - Civil, MEP, Woodwork ,
Finishing Works





COMMERCIAL

20

Breaderie - Obhur

SKAB

Project Duration 2 Months

Client SKAB

Project Description Bakery Chain





COMMERCIAL

21

Office Renovation

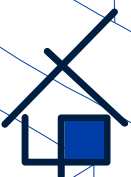
Hammad and Mehdar

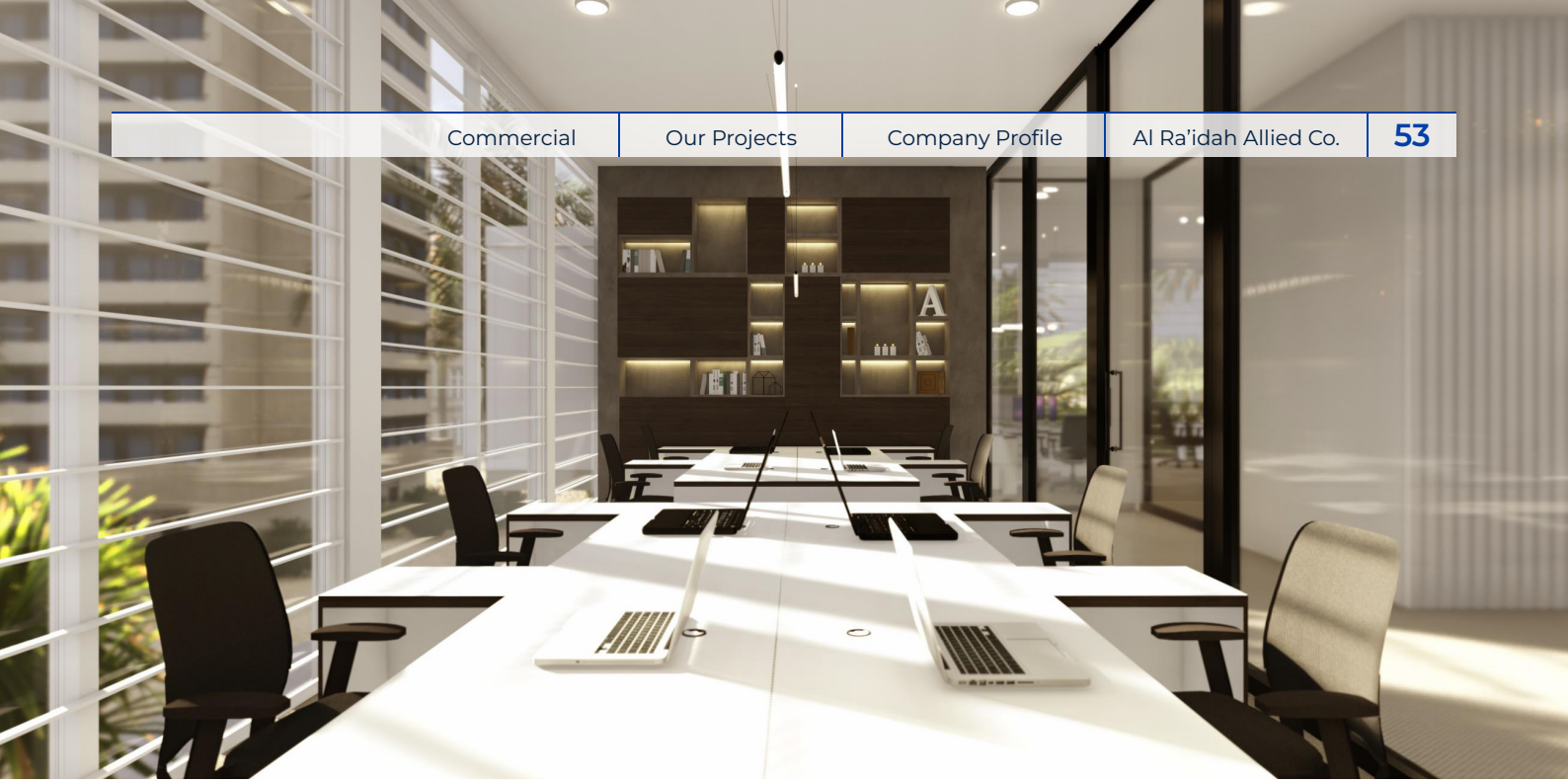
Project Duration 3 Months

Client Hammad and Mehdar

Project Description Office Renovation

Scope of Work Design and Engineering





COMMERCIAL

22

Furniture Supply

HABITAS - AL ULA

Project Duration 3 Months

Client HABITAS - AL ULA

Project Description Furniture Supply

Scope of Work Furniture Supply - Communal Areas, Caravans





Contact Information



Company Name

Al Raidah Allied



Commercial Registration No.

4030279908



Vat No.

302007034700003



E-mail Address

info@rac-ksa.com



Web Address

www.rac-ksa.com



Head Office Address

2790 Al Misk Street
Unit No.6
Al Hamra District
Jeddah, 23321 -6642
Kingdom of Saudi Arabia



Telephone

+966 12 661 3633



Our Clients



Saudi Diyar Consultants



Binzagr Company



Patchi



Cigalah Group



El Khayyat Group



Leylaty Group



Juffali Group



Davidoff



Frais & Fresh



Ayan Holding



Michelin



Habilitas



Hammad & Al-Mehdar

Dow Chemical
Company






Our Group

We represent all the companies under Leviat group



Stainless steel fabrications and masonry support systems, engineered concrete connections including shear load connectors, and reinforcing bar couplers.



Innovative concrete connections including slender, high strength, steel-concrete composite columns and a comprehensive range of acoustic products.



Dowel and continuous pour jointing systems for slab-on-ground applications, such as pavements and industrial concrete floors.



Comprehensive range of anchoring, reinforcing, framing and façade fixing technology, for both construction and industrial applications.



A wide selection of mechanical rebar splicing technology, precast concrete accessories and post-tensioning systems.



Innovative helical wall ties, fixings and masonry repair systems offering concealed, non-disruptive installation techniques.



Superior jointing systems for industrial concrete floors featuring armoured edge protection to reduce maintenance in high traffic areas.



Comprehensive portfolio of engineered accessories and safety products for concrete construction.



Engineered masonry and concrete connections, plus reusable and lost formwork solutions and building site accessories.



Custom-made support systems and lintels for masonry façades, plus thermal break technology to limit heat loss through the building envelope.



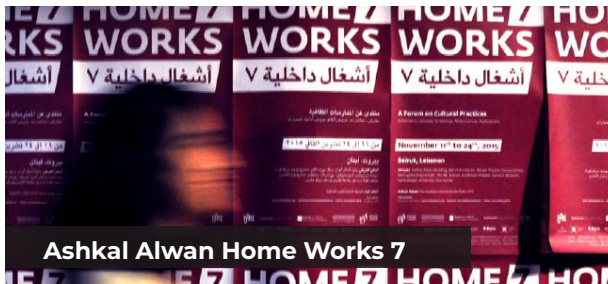
Insulation systems for use in precast, tilt-up and cast-in-place concrete building envelopes, designed for enhanced energy-efficiency and thermal performance.



Our Global Partners

PenguinCube

PenguinCube designs brands, wayfinding & signage programmes, and product experiences for clients in numerous sectors and in over 36 cities.



Ashkal Alwan Home Works 7

Brand Design

Distinctive brand experiences.



Alserkal Avenue

Wayfinding & Signage Design

Navigation experiences that connect people to place.



Raio Paints

Product Design

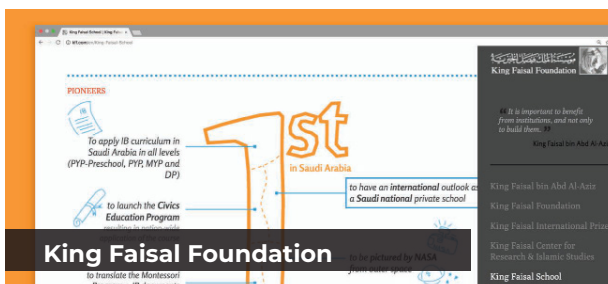
Intuitive product research & development.



Ashkal Alwan Donor Wall

Spatial Design

Immersive and captivating spaces.



King Faisal Foundation

User Interface Design

Fluid user experiences.



Pi

Research

Process Makes Perfect. Committed to Investing in Research.



Middle Corniche Park
منتزه الكورنيش الأوسط

Al Kurnaysh Br Rd

Twina Seafood -
Corniche Alhamra

Al Hamraa

Our Headquarters

2790 Al Misk Street, Unit No.6
Al Hamra District
Jeddah, 23321 -6642
Kingdom of Saudi Arabia





Al Ra'idah Allied Co.

www.rac-ksa.com

info@rac-ksa.com

+966 12 661 3633